



WISRD

Wide-area ISR Discovery

CM

COLLECTION MANAGEMENT



WISRD-CM provides prioritized, time-sensitive ISR and other asset planning tools to support operational Electronic Warfare, Intelligence, and Information Dominance requirements and mission objectives. These capabilities facilitate multi-echelon and joint collaboration, ensuring the effective alignment and prioritization of (EW, Intel, and Cyber) assets and dynamic sensor re-tasking. By reducing duplication of effort and accelerating the synthesis of post-mission data, WISRD-CM enables timely and actionable intelligence, enhancing operational effectiveness and supporting mission success.

COLLECTION PLANNING

Identify, schedule, and control collection assets and resources.

RESOURCE AVAILABILITY & CAPABILITY

Provide the availability and capability of collection assets and resources to satisfy requirements.

REQUEST OR TASK ASSETS/ RESOURCES

Prioritization of requirements to determine how each request can be satisfied.

COLLECTION OPERATIONS MANAGEMENT

Monitoring and dynamic re-tasking to the collection plan when threats, weather or other factors impact operations.

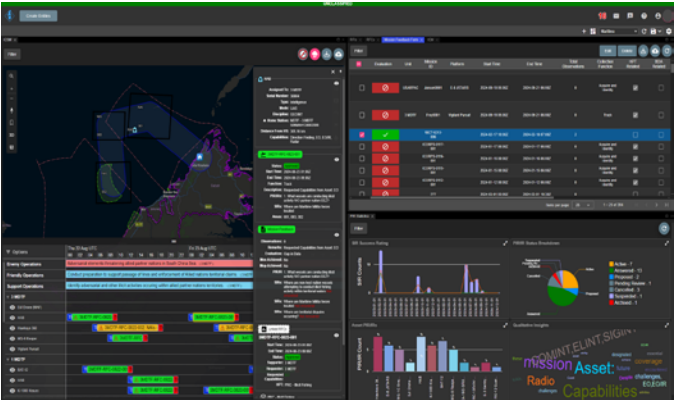
WISRD - COLLECTION MANAGEMENT

DEEP SENSING VISUALIZATION

WISRD-CM is an enabling capability within the COP that facilitates coordination and synchronization of ISR activities supporting the joint force and component commands.

ISR DISPLAY

WISRD-CM provides an easily comprehended, readily accessible, graphic display of collection asset locations, their capabilities, their field of regard, and their tasked targets.



CURRENT OPERATIONS

WISRD-CM is integrated in NRT with current military operations. Additionally, in order to assess the risk to ISR operations it includes current intelligence overlays depicting changes in adversary capabilities.

TIME-SENSITIVE DECISION MAKING

WISRD-CM helps identify fleeting opportunities for collection or strike operations against enemy time-sensitive targets that may warrant dynamic re-tasking of collection platforms or strike assets.

powered by



CyOne

CyOne is comprised of a team of highly experienced, trained, and motivated cyber security specialists, software development engineers, intelligence analysts, and technological consultants. The knowledge and experience of our teams spans across multiple intelligence and engineering domains within DOD.

Chief Executive Officer

Kevin Mullis

admin@cyone.com

667.268.1493

1202 Technology Dr., Suite B

Aberdeen, MD 21001

Cage Code: 78D67

DUNS: 079562461