

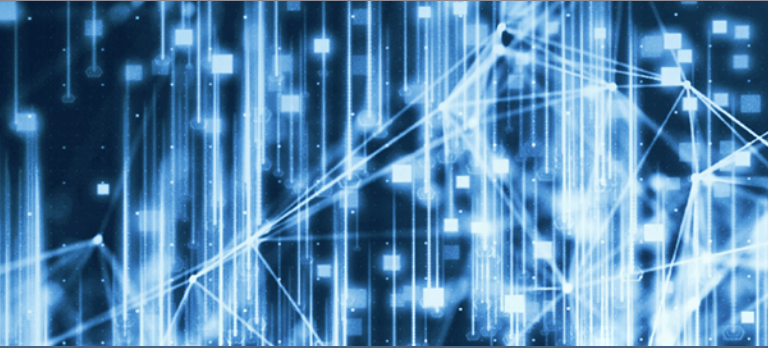


# WISRD

Wide-area ISR Discovery

# WX

## WEATHER EFFECTS



**WISRD-WX** enables the analysis of weather impacts and effects during the collection, processing, evaluation, and interpretation of relevant military operations. These capabilities enable planning professionals and decision makers with the ability to evaluate the effects of each military aspect of weather and identify which aspects have the most bearing on operations and decision making.

### ANALYZE

#### **Enables the analysis of the military aspects of weather**

including: visibility, wind, precipitation, cloud cover, temperature, humidity, and atmospheric pressure.

### EVALUATE

**Supports the evaluation of weather effects and their impacts on both friendly and hostile military operations.**

### DISSEMINATE

**Allows for the dissemination and evaluation of weather related data via its internal API utilization.**

### SHARE

**WISRD-WX can share data via OGC standards.**

# WISRD - WEATHER EFFECTS

## WEATHER PRODUCTS

Provides ability to retrieve historical climatological outlook products based a units Operational Environment (OE). Products are retrieved from the 14th WS and include climograms, monthly summaries, and narratives.

## WEATHER FORECASTING

Provides weather outlook and impact data for a units OE based on user defined rulesets and data from GALWEM. Additionally, provides daily forecast information as well as GALWEM raw table data for review.



## WEATHER IMPORT

Enables analysts with the ability to locally import grb and grb data in the event that they enter a DIL environment with limited connectivity that would otherwise prevent them from connecting to AFWA services.

## GEOSPATIAL ANALYTICS

Enables geospatial based analytics to generate 5-day forecasts with mission impacts from anywhere on the map. Allows for solar/lunar illumination and TAF/Synoptic reporting from the map. Enables receipt of various weather message types to support Multi-Domain Operations.

powered by



CyOne

CyOne is comprised of a team of highly experienced, trained, and motivated cyber security specialists, software development engineers, intelligence analysts, and technological consultants. The knowledge and experience of our teams spans across multiple intelligence and engineering domains within DOD.

Chief Executive Officer

**Kevin Mullis**

**admin@cyone.com**

**667.268.1493**

1202 Technology Dr., Suite B

Aberdeen, MD 21001

Cage Code: 78D67

DUNS: 079562461